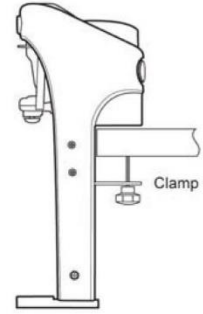
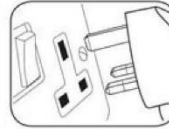
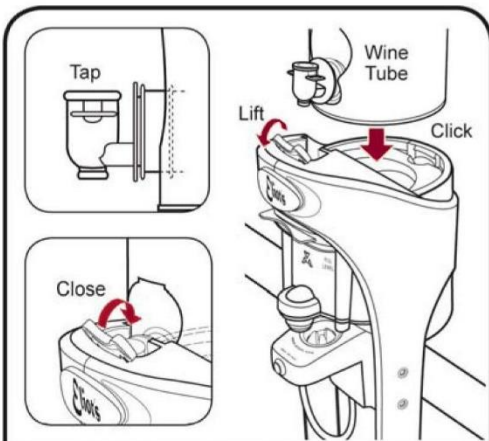


IMPORTANT
Must be
clamped to
a surface



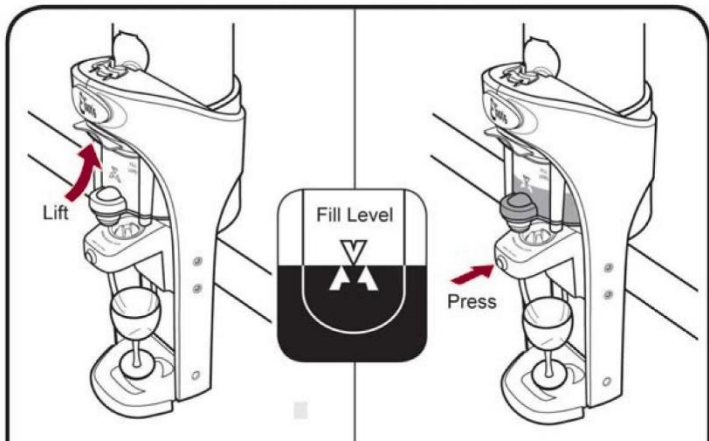
Installation

Clamp the dispenser firmly to a surface before use.
Plug into the mains. Unplug from the mains to turn off.



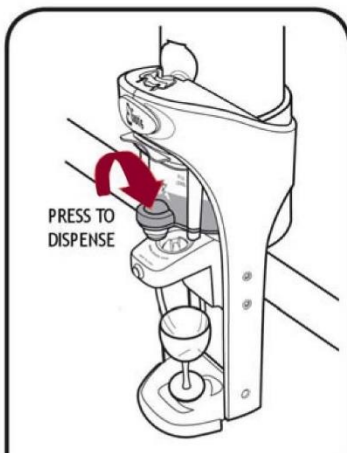
Fitting Wine Tube

Position tap on wine tube as shown. Lift front clip. Lower wine tube fully into dispenser. Close front clip.



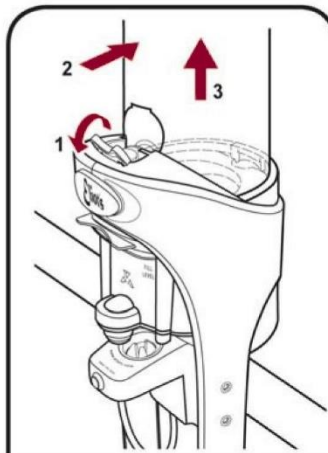
Operating

Place glass on drip tray. SLOWLY lift lever and fill tank ONCE up to 'Fill Level'. Release lever. Press heater button and hold until LED changes from Blue to RED



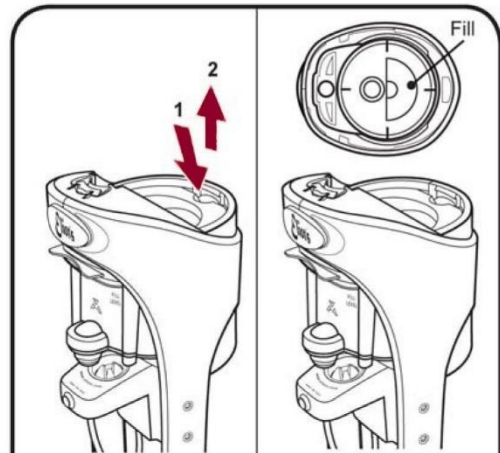
Dispensing

When LED flashes red/blue and buzzer sounds the wine is ready to serve
Press down on top of outlet valve & hold until measure is dispensed



Removing Wine Tube

1. Lift front clip. 2. Push tube backwards slightly. 3. Lift out tube.



Cleaning

1. Press tab. 2. Lift top from the dispenser. 3. Follow cleaning instructions below

CLEANING

WASH TOP & DRIP TRAY IN WARM SOAPY WATER. USING A GLASS OF CLEAN WATER Poured into "FILL" HOLE INSTEAD OF WINE, PRESS HEATER BUTTON & DISPENSE AS USUAL. REPEAT 3 OR 4 TIMES TO FLUSH OUT WINE CHAMBER BEFORE STORING FOR OFF-BAR SEASON

HELPLINE: 01531 825367

PLEASE UNPLUG WHEN NOT IN USE